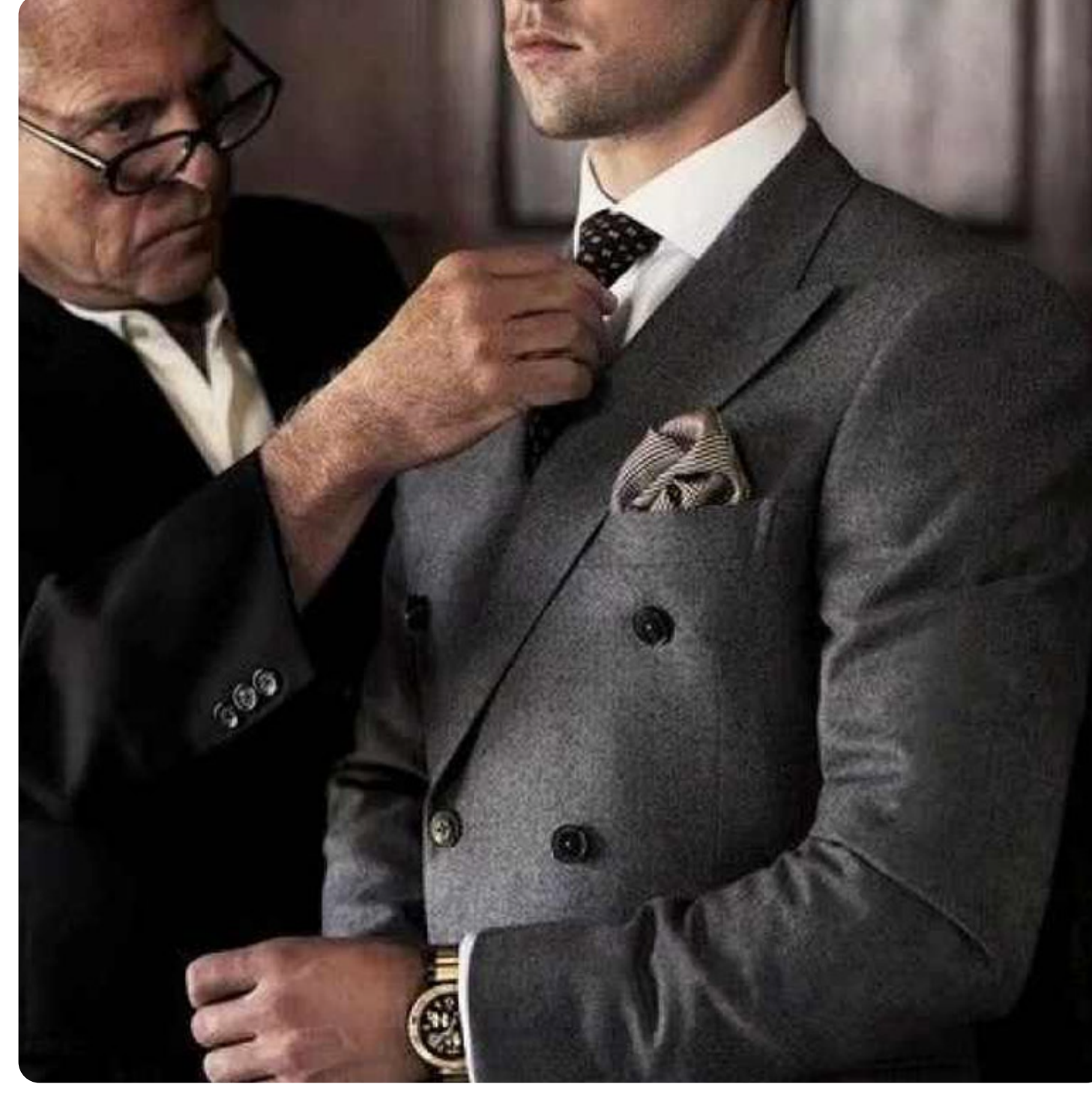


rG⁰



OFFLINE (ANALOG)

- + INTERNET OF INFORMATION
- + E-COMMERCE
- + PAYMENT GATEWAYS
- + ONLINE SEARCH
- + DATA PROCESSING
- + NO PHYSICAL BOUNDARIES

- + CRM SYSTEMS
- + SEGMENTATION
- + CUSTOMER INTERACTION
- + MASS CUSTOMIZATION
- + E-COMMERCE
- + CUSTOMER LIFETIME VALUE

- + SMARTPHONES
- + SMART APPS
- + SOCIAL MEDIA
- + PEER REVIEWS
- + SHARING ECONOMY
- + 3G/4G MOBILE INTERNET

- + ONLINE SEARCH
- + E-COMMERCE
- + INVENTORY SYSTEMS
- + ELECTRONIC CATALOGS
- + PAYMENT GATEWAYS
- + CUSTOMER FOCUSED

rG¹



ONLINE (ELECTRONIC)

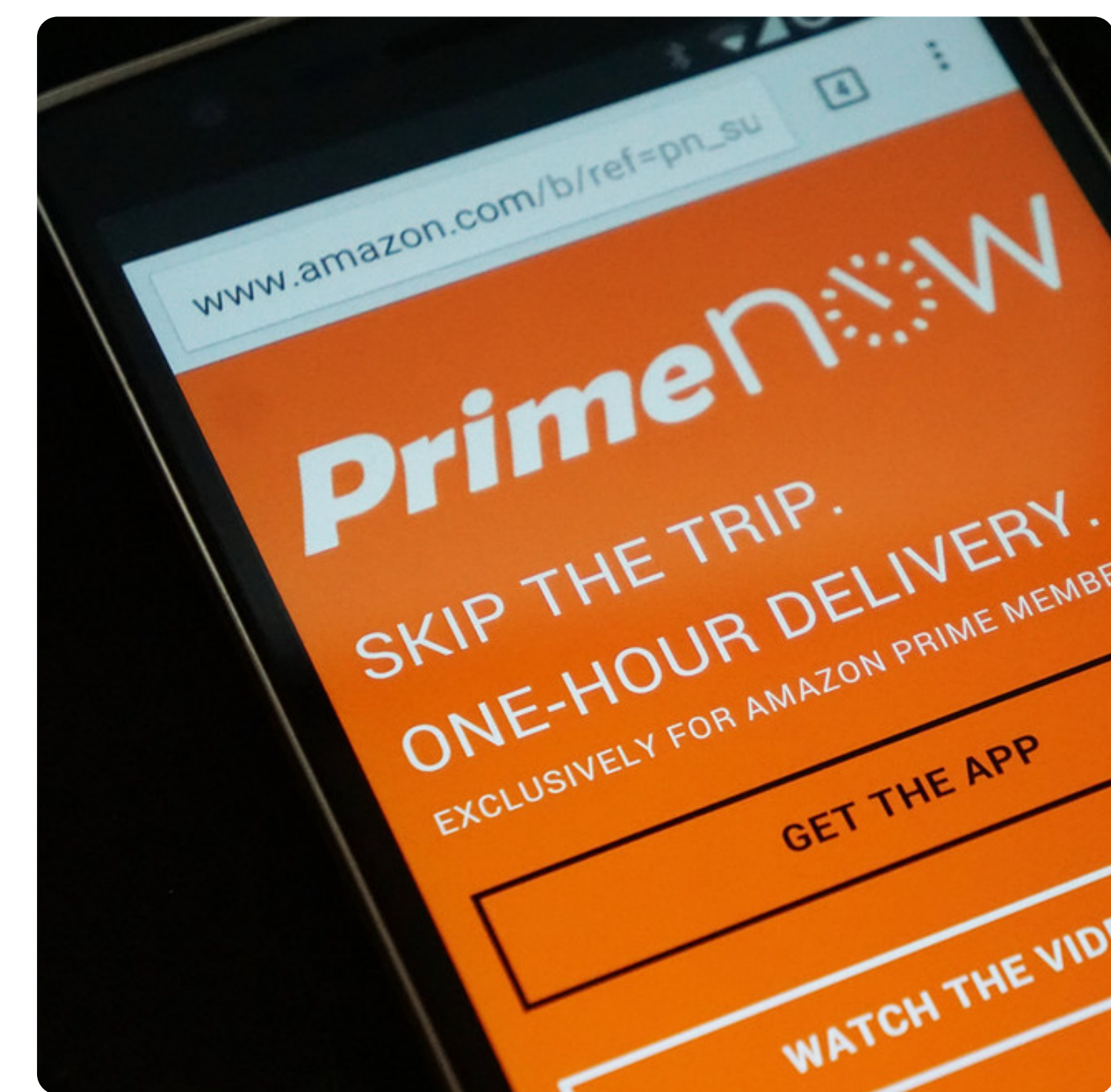
- + SMARTPHONES
- + QR CODE SCANNING
- + MOBILE INTERNET
- + CX MANAGEMENT
- + INTERNET BANKING
- + MOBILE PAYMENTS

- + CEM SYSTEMS (EXPERIENCE)
- + CUSTOMER LOYALTY
- + SATISFACTION RATING
- + CUSTOMER ENGAGEMENT
- + SERVICE EXCELLENCE
- + CUSTOMER FEEDBACK

- + GPS TRACKING
- + SMART APPS
- + MOBILE AUTHENTICATION
- + RESOURCE OPTIMIZATION
- + LIVEABLE CITIES
- + CAR BRANDS ENTERING

- + SMART DISTRIBUTION
- + CLOUD NETWORKS
- + SOCIAL PLATFORMS
- + PEER REVIEWS
- + CUSTOMER INSIGHTS
- + LIFETIME VALUE

rG²



MOBILE (APPS)

- + SMART APPS
- + SMART SENSORS 1.0
- + SMART SHOPPING CARTS
- + 4G/5G MOBILE INTERNET
- + ARTIFICIAL INTELLIGENCE
- + SMART RESTOCKING

- + CSM SYSTEMS (SUCCESS)
- + CUSTOMER DATA PLATFORM
- + CUSTOMER ANALYTICS
- + CUSTOMER STACK
- + 360° CUSTOMER PROFILE
- + HYPERTARGETING

- + ADAS (AUTONOMOUS)
- + SMART SENSORS 1.0
- + INTELLIGENT ROADMAPS
- + 4G/5G MOBILITY
- + CUSTOMER FOCUSED
- + ELECTRIC ENGINES

- + SMART SPEAKERS
- + VOICE RECOGNITION
- + ARTIFICIAL INTELLIGENCE
- + INLINE SEARCH
- + CUSTOMER INTENT
- + POS2 (SEARCH & SALE)

rG³



INLINE (DIGITAL)

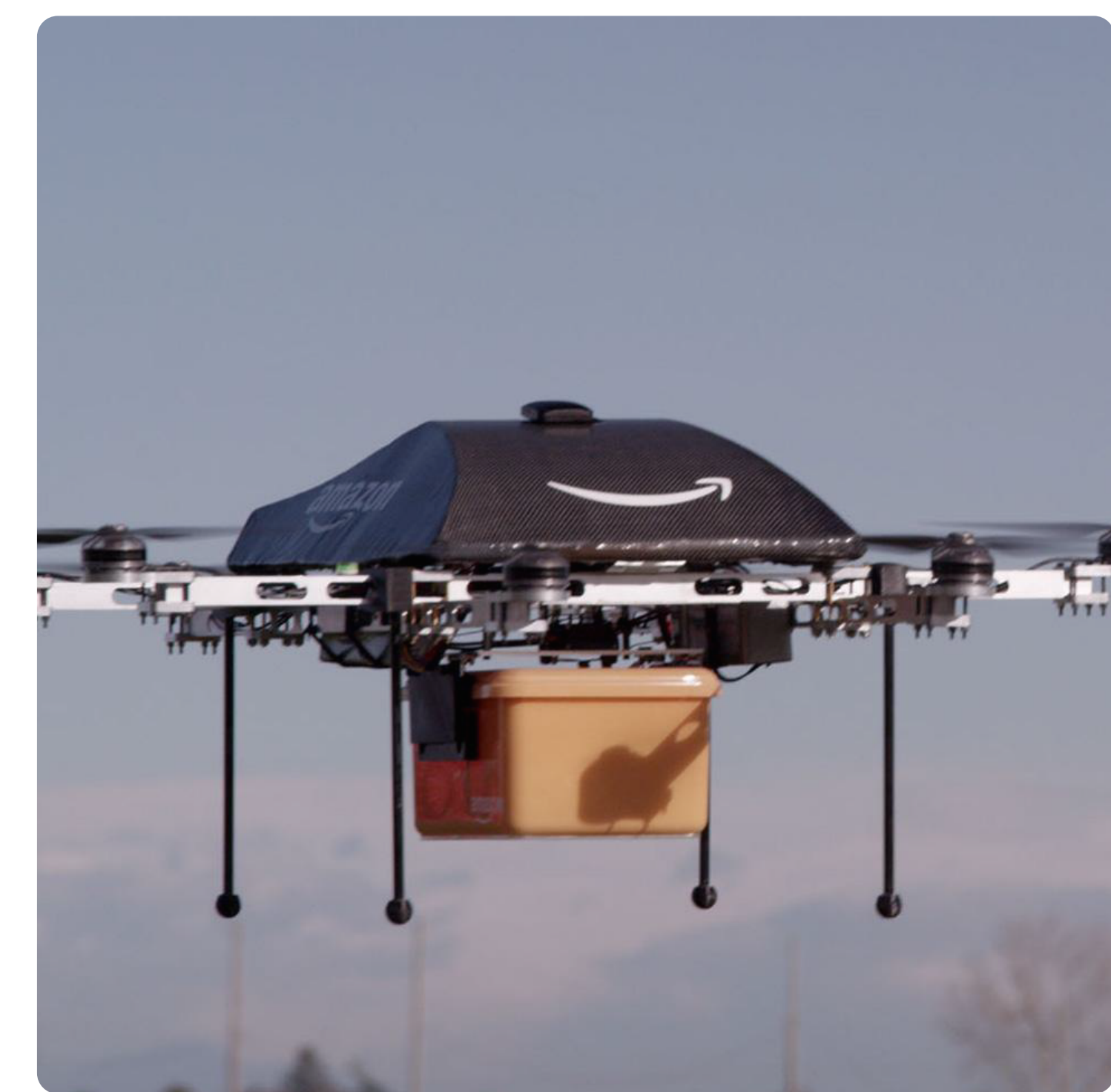
- + SMART HOMES
- + SMART APPLIANCES
- + PREORDERING
- + AUTONOMOUS DELIVERY
- + INTERNET OF THINGS
- + HUMANLESS

- + PSD2 INTEGRATION
- + SMART CUSTOMER
- + ARTIFICIAL INTELLIGENCE
- + 5G SENSORS/ACTORS
- + MIXED REALITY
- + HUMAN 2.0

- + AUTONOMOUS PODS
- + SMART SENSORS 2.0
- + INTELLIGENT ROADS
- + 5G CONNECTED DEVICES
- + INTERNET OF THINGS
- + HYDROGEN ENGINES

- + GPS TRACKING
- + SMART LOGISTICS
- + BATTERY INNOVATION
- + DRONE TECHNOLOGY
- + COMPOSITES
- + RULES & REGULATIONS

rG⁴



OMNILINE (BOTS)